

Pukehina Cycleway/Walkway

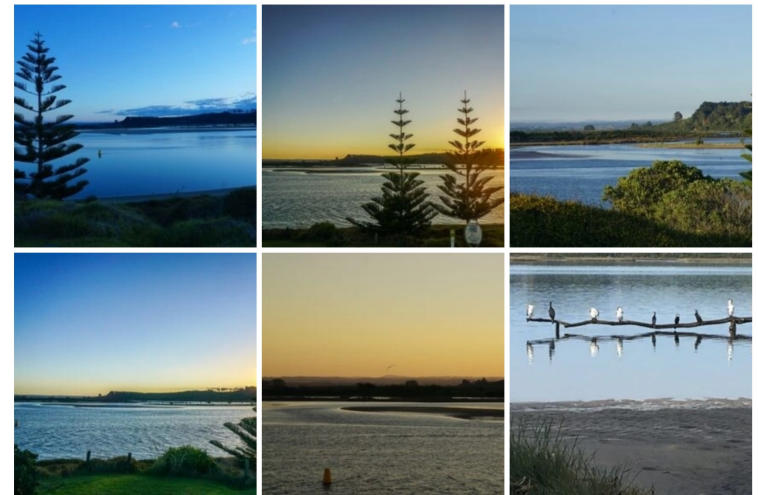
Pukehina Residents' and Ratepayers' Association



The Cycleway / Walkway project

The PRRA holds a resource consent to develop a Cycle/walkway along Waihi estuary from the Pukehina Surf Club to Cut Water Road (67403). This was applied for in February 2013 and approved in March 2018 by BOPRC.

- The consent includes the construction of a cycleway/walkway including four sections of boardwalk, two bridges and a pumice pathway.
- The walkway/cycleway is on Crown Land (Marginal Strip) and Block Waihi South SD Section 65 Block I Waihi SD (Western Bay of Plenty District).
- The consent expires 21st May 2048.



Pukehina Cycle & Walkway

Pukehina Ratepayers' & Residents' Association

0  1,150 Meters



Note: The blue dotted line is the current walkway project. The yellow dotted line also has resource consent but Te Heriheri/Cutwater Road is now a significant ecological area given the restoration, conservation and wetland development efforts of Te Wāhapu o Waihi, Maketu Ongatoro Wetland Society, DOC the and Regional Council so may not now be possible.

A very special place

A lot of mahi is currently taking place to restore the mauri and water quality of the estuary. Te Wahapū o Waihi are working with landowners and regional council to change practices & create a thriving estuary that supports mahinga kai.

A wide variety of native and migrant birds use the estuary and mudflats for feeding and roosting, especially during the winter.

- Bar-tailed godwits, royal spoonbills, heron, wrybill, the extremely rare and threatened fairy tern, and bittern.
- The estuary has large areas of natural saltmarsh, an enclosed mainly freshwater wetland, streams and farm drains.



Variable Oystercatcher



Bar-Tailed Godwit



White-Fronted Tern



Photo credit Maketū Ōngātoro Wetland Society <https://maketuwetlands.org.nz>

A thriving estuary

A lot of mahi is currently taking place to restore the mauri and water quality of the estuary and restore the biodiversity and ecosystems of the surrounding whenua/land.

Ka nui te mihi ki a koutou.

- Te Wahapū o Waihi (Ngāti Whakahemo, Ngāti Whakaue ki Maketū, Ngāti Mākino, Ngāti Pūkiao and Tapuika)
- Maketu Ongatoro Wetland Society
- Department of Conservation
- Fish and Game
- BOP Regional Council
- Western BOPDC
- Predator Free BOP
- Wai Kōkopu
- Bay Conservation Alliance
- Wider community and whānau 😊



Connecting our community

A constructed cycleway/walkway has a huge number of benefits to the local and wider community:

- Hauora/wellness - exercise and recreational opportunities, nature connection
- Encouraging manaaki/care, respect and appreciation for our native wildlife and estuarine/wetland environments
- Connection and potential links to the wider network of cycleways in the WBOP
- A safe cycling and walking route.



Where are we at in 2026?

It's an exciting project that's been a long time in the wings but things have been progressing:

1. 2002-2025:

- completed erosion control works in section 1 of trail
- replaced the set of stairs that includes a bike gutter to the stop bank
- continued the mowing of the stop bank post the amazing weed control that MOWS have done/do
- marked the trail through the wetland ready for boardwalk planning

2. We have secured some funding for the boardwalk and bridge sections:

1. \$50k from WBOPDC to assist with boardwalk planning and implementation
2. \$150,000 from the Pukehina Development Fund to assist with boardwalk construction
3. A RFP bridge with handrails to go across the stop bank (from WBOPDC)

3. Are working with:

- MOWS to extend the weed control programme for cooch grass
- Ngāti Whakahemo to name the walkway
- Other organisations to ensure we understand roles and aspirations and the changing conservation focuses for this precious area.



The Trail



Section 1: Ororoa Reserve to 604 Pukehina Parade

- This section is Crown Land, a grass reserve strip that will remain unchanged.
- We completed a coastal report in 2021 and removed over 6 tonnes of concrete rubble at the Boat ramp/Oruroa Reserve.
- We completed sand re-nourishment (using sand from the Surf Club building excavation), removed rubbish dumped and buried over the years, relocated picnic tables, laid topsoil and grass:
 - This has created a welcoming start to the trail and restored the mauri of this area.
 - It no longer floods in king tides
 - Great partnership with Ngāti Whakahemo hapū, WBOPDC, BOPRC, DOC & the Surf Club.
 - Thanks to all the volunteers that helped!



Section 2: 604 Pukehina Parade to culvert

- This section of the trail is wetland and will comprise of a raised wooden boardwalk and some mowed grass parts.
- It will be able to be used by bikes, walkers, pushchairs, wheelchairs and mobility scooters.



Section 3: Bridge across the culvert

- The consent allows for a bridge from the boardwalk (section 2) across to the top of the stop bank.
- An interim set of stairs was built in 2022, with a bike gutter so the stop bank pathway is accessible at low tide.



Section 4: Along the stop bank to the Pukehina Canal

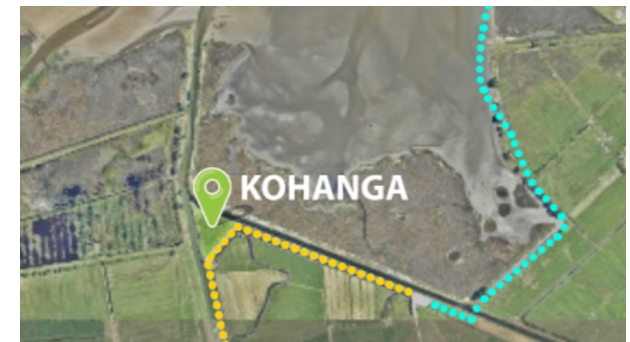
- Once up on the stopbank the pathway goes to the Pukehina awa/canal, then you turn around and re-trace your path.
- MOWS have cleared the stopbank of pampus and gorse and this is now regularly mowed by the adjacent landowner.
- The aim here is to keep mowing this area along to the Pukehina canal. It is suitable as is without constructing a pumice track.
- *NB: future plans could include linking to Cutwater Road or as an alternative, Midway Park. Both options require more kōrero – noted further along.*
- *Also to note now is the presence of matuku-hūrepo / bittern at the end of this section. The resource consent says that once constructed dogs will be required to be on a lead at all times. The area could also have restrictions that are put in place at certain times. TBD more.*



Section 5 – to be revisited:

The Kohanga – wetland area at end of Cutwater Road

- This area was developed in 2021/22 and is now planted and growing into an incredible ecological area.
- Te Wāhapu o Waihi have recently created a new wetland and this will become another flourishing ecological area.
- *NB: the current consent takes the walkway to Cutwater Road (via a track alongside the canal, across an existing culvert or build bridge #2 across to Cutwater Road). With the incredible conservation and restoration mahi over the past five years this will need to be re-visited with Te Wāhapu o Wāihi and DOC and may not be possible.*



One vision was to create a pathway back along the Pongakawa Awa and come out at the Pukehina turnoff on State Highway 2 (yellow dotted line).



Potential for Section 6:

Bridge across Pongakawa Awa - linking to Wharere and Arawa Road

- Many years ago there was a bridge that went across the Pongakawa Awa and connected up to Wharere road
- *NB: This was a longer term vision and would have to be explored further depending on conservation and wetland development and visions for Te Heriheri / Cutwater Road.*



For more information see pukehinabeach.co.nz

